

VHF/UHF Antennas with Amplifier for Mobile Units

| Model | | 5MS921 | HDMS9100 |
|----------------------------|------|--------------|--------------|
| Mfg | | AntennaCraft | AntennaCraft |
| Channels | | 2 – 69 | 2 – 69 |
| Impedance | ohms | 75 | 75 |
| Amplifier | | | |
| Gain - VHF | dB | 15 | 16 |
| Gain - UHF | dB | 20 | 20 |
| Noise Figure - VHF | dB | <3.9 | <3.7 |
| Noise Figure - UHF | dB | <2.3 | <2.9 |
| Antenna | | | |
| Gain – VHF-L | dBd | -25.4 | -15.8 |
| Gain – VHF-H | dBd | -10.8 | -6.4 |
| Gain – UHF | dBd | -5.9 | 2.5 |
| Beamwidth | | | |
| VHF-L | deg | - | 133 |
| VHF-H | deg | - | 207 |
| UHF | deg | - | 48 |
| Front-to-back ratio | | | |
| VHF-L | dB | - | 13.2 |
| VHF-H | dB | - | 12.6 |
| UHF | dB | - | 8.7 |
| Diameter | mm | 523 | 533 |
| Height | mm | 51 | 163 |
| Weight | kg | 2.7 | 6.9 |
| Part # | | 36192 | 36003 |



5MS921 : Omni

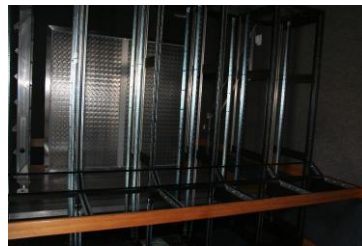


HDMS9100 : Directional with remote control and memory

- Ideal for HDTV
- 12Vdc or 110Vac power (AC adapter included)
- UV-resistant radome

The HDM9100 model has the reception direction adjusted by remote control, and the optimal direction for each channel can be stored in memory.

Racks and Blank Panels



Screw Kit for fixing panels and equipments (100 pairs)



| | |
|--------|-------|
| Screw | M5x16 |
| Part # | 31472 |

| Blank Panels | Part # |
|--------------|--------|
| 19" 1U | 16108 |
| 19" 2U | 16167 |
| 19" 3U | 16161 |
| 19" 4U | 16162 |
| 19" 5U | 16163 |
| 19" 6U | 16164 |
| 19" 7U | 31939 |
| 19" 8U | 31941 |
| 19" 9U | 31942 |
| 19" 10U | 31943 |
| 19" 11U | 31712 |
| 23" 3U | 16273 |
| 24" 2U | 14419 |
| 24" 3U | 17125 |
| 24" 6U | 16165 |
| 24" 8U | 16266 |

Please specify color/finish when ordering. Call us for other sizes.

Installation Accessories for Vehicle Integration

Battery Isolator

Allows the vehicle alternator to charge both the vehicle and equipment batteries, but prevents the equipment from discharging the vehicle battery.



| Model | 952 | 9523A | 952R |
|--------------------------|--|--|--|
| Mfg | Sure Power | Sure Power | Sure Power |
| Max Alternator A Current | 95 | 95 | 95 |
| Aux Battery Groups | 1 | 1 | 1 |
| Alternators | Delco (not Delcotron CS). Motorcraft (Ford). Chrysler. Nippondenso ext.reg Motorola 8EM | Delcotron CS. Nippondenso intern.reg. | Motorola (not 8EM). Bosch (with adjust sensor) |
| Weight | g | | |
| Part# | 11869 | 12226 | 12227 |