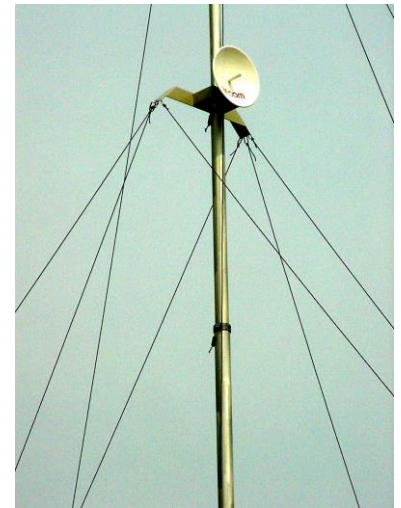


Remote Control Antenna Alignment Support



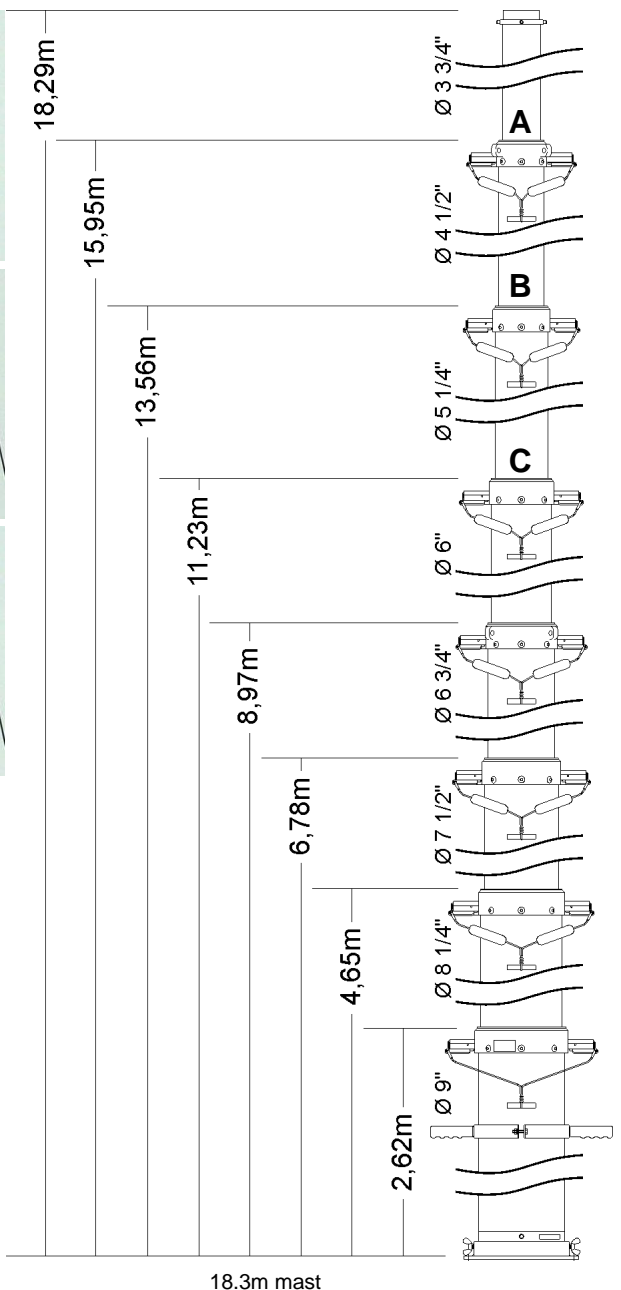
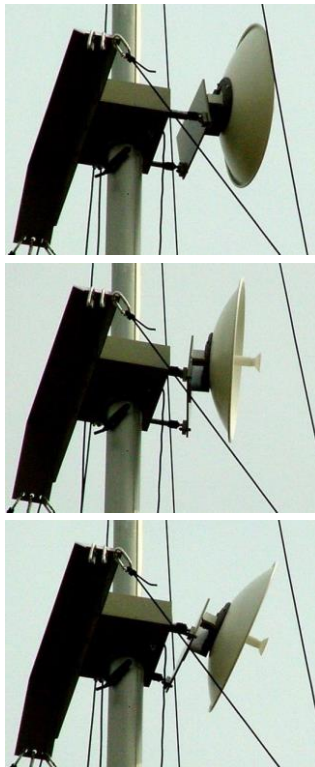
The support is mounted on the mast or tower, and has attaching points for the stabilizing guy lines.

The unit includes servo actuators, which allow alignment adjustments using a (wired) remote control box.

Several antenna mount styles available, for up to 1.2m antenna diameters.

Includes a guying kit part # 16239, and remote control box, part # 16770.

The support can be mounted on three different heights on the mast: "A", "B", and "C" on the diagram on the right, with the 10-60 mast (part # 11586).



Model	Antenna Positioner
	14030
Mfg	RF COM
Weight (kg)	12.5
Size (mm)	420x380x210
Part#	14030
	without guying kit/guying arm
	guying kit only
	16541
	16239



Adjustment:

Vertical ± 22° @ 0° Horizontal
 Horizontal ± 17° @ 0° Vertical
 Horizontal ± 10° @ +10° Vertical
 Horizontal ± 8° @ -10° Vertical

Remote control box



Model	16770
Mfg	RF COM
Weight (g)	350
Size (mm)	200x120x77
Part#	16770

18.3m mast